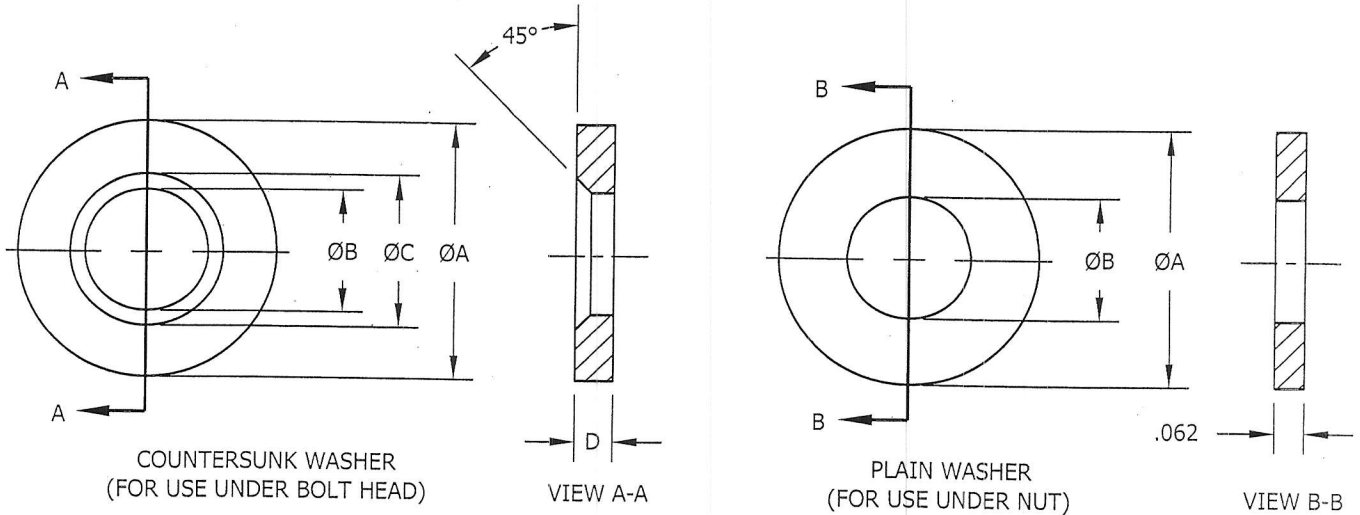


FED. SUPPLY CLASS
5310

AEROSPACE INDUSTRIES ASSOCIATION OF AMERICA, INC.
1000 WILSON BLVD.
ARLINGTON, VA 22209



③ TABLE I - DIMENSIONS

THREAD SIZE	PART NUMBER		ØA	ØB		ØC		D	FLATNESS TOLERANCE
	COUNTERSUNK	PLAIN		MAX	MIN	MAX	MIN		MAX
1/4	MS20002C4	MS20002-4	.531	.260	.252	.344	.334	.078	.007
5/16	MS20002C5	MS20002-5	.593	.324	.315	.406	.396		
3/8	MS20002C6	MS20002-6	.687	.385	.378	.495	.483		
7/16	MS20002C7	MS20002-7	.781	.451	.441	.557	.543	.078	.007
1/2	MS20002C8	MS20002-8	.875	.515	.504	.620	.604		
9/16	MS20002C9	MS20002-9	.968	.579	.568	.687	.667		
5/8	MS20002C10	MS20002-10	1.062	.643	.631	.785	.765	.078	.010
3/4	MS20002C12	MS20002-12	1.250	.770	.757	.910	.890		
7/8	MS20002C14	MS20002-14	1.437	.897	.884	1.035	1.015		
1	MS20002C16	MS20002-16	1.625	1.025	1.010	1.160	1.140	.078	.010
1-1/8	MS20002C18	MS20002-18	1.875	1.150	1.135	1.285	1.265		
1-1/4	MS20002C20	MS20002-20	2.125	1.275	1.260	1.447	1.427		
1-3/8	MS20002C22	MS20002-22	2.313	1.400	1.385	1.572	1.552	.094	.015
1-1/2	MS20002C24	MS20002-24	2.500	1.525	1.510	1.697	1.677		

MATERIAL: ALLOY STEEL PER AMS-STD-66 AIR4127, STEEL NO. 1330 OR 4130.

HEAT TREAT: 125,000 TO 145,000 PSI PER AMS-H-6875 AMS2759.

FINISH: CADMIUM PLATING PER AMS-QQ-P-416, TYPE II, CLASS 2. PARTS WITH CLASS 3 PLATING MAY BE FURNISHED FROM SUPPLIER'S STOCK UNTIL 1 JANUARY 1975.

THE INITIAL RELEASE OF THIS DOCUMENT SUPERSEDES MS20002, REVISION E. PART NUMBERS REMAIN MS20002.

THIRD ANGLE PROJECTION	CUSTODIAN NATIONAL AEROSPACE STANDARDS COMMITTEE	REVISION 3
PROCUREMENT SPECIFICATION NONE	TITLE WASHER, COUNTERSUNK AND PLAIN, HIGH STRENGTH	CLASSIFICATION PART STANDARD NASM20002
		SHEET 1 OF 2

THIS DRAWING SUPERSEDES ALL ANTECEDENT STANDARD DRAWINGS FOR THE SAME PRODUCT AND SHALL BECOME EFFECTIVE NO LATER THAN SIX MONTHS FROM THE LAST REVISION DATE.

NOTES:

- (1) REMOVE ALL BURRS AND SHARP EDGES.
- (2) WASHER FACES SHALL BE PARALLEL WITHIN .002 INCH.
- (3) DIMENSIONS IN INCHES AND APPLY AFTER FINISH UNLESS OTHERWISE SPECIFIED.
- (4) TOLERANCES UNLESS OTHERWISE SPECIFIED: DECIMALS $\pm .010$, ANGLES $\pm 1^\circ$.
- (5) THESE WASHERS ARE PRIMARILY FOR USE WITH THE 160,000 PSI INTERNAL WRENCHING BOLTS SHOWN ON NASM20004 THROUGH NASM20024.
- (6) THIS STANDARD TAKES PRECEDENCE OVER DOCUMENTS REFERENCED HEREIN.
- ③ (7) UNLESS OTHERWISE SPECIFIED HEREIN, REFERENCED DOCUMENTS SHALL BE THE ISSUE IN EFFECT ON DATE OF MANUFACTURE. HOWEVER, EXISTING MATERIAL INVENTORY CERTIFIED TO A PREVIOUS REVISION OF THE APPLICABLE MATERIAL SPECIFICATION(S) IS ACCEPTABLE FOR USE UNTIL DEPLETION.
- (8) UNLESS OTHERWISE SPECIFIED, PART INVENTORY MANUFACTURED TO PREVIOUS REVISIONS OF THE APPLICABLE DRAWING OR SPECIFICATION MAY BE PROCURED AND USED UNTIL STOCK IS DEPLETED.
- ③ (9) DIMENSIONING AND TOLERANCING PER ANSI Y14.5M-1982.

INTERCHANGEABILITY:

- ③ SELECT WASHERS FROM THE FOLLOWING INTERCHANGEABILITY TABLE OF THIS STANDARD AS SUBSTITUTIVE PARTS FOR NAS143.

INACTIVATED PART NOS.	SUBSTITUTIVE PART NOS.
WASHER -- COUNTERSUNK	
NAS143	MS20002
-4C	C4
-5C	C5
-6C	C6
-7C	C7
-8C	C8
-9C	C9
-10C	C10
-12C	C12
-14C	C14
-16C	C16
-18C	C18
-20C	C20
-22C	C22
-24C	C24

INACTIVATED PART NOS.	SUBSTITUTIVE PART NOS.
WASHER -- PLAIN	
NAS143	MS20002
-4	-4
-5	-5
-6	-6
-7	-7
-8	-8
-9	-9
-10	-10
-12	-12
-14	-14
-16	-16
-18	-18
-20	-20
-22	-22
-24	-24

REVISION

3

NASM20002

SHEET 2

AEROSPACE INDUSTRIES ASSOCIATION OF AMERICA, INC
1000 WILSON BLVD.
ARLINGTON, VA 22209

THIS DRAWING SUPERSEDES ALL ANTECEDENT STANDARD DRAWINGS FOR THE SAME
PRODUCT AND SHALL BECOME EFFECTIVE NO LATER THAN SIX MONTHS FROM THE LAST
REVISION DATE.

FORM 09-01